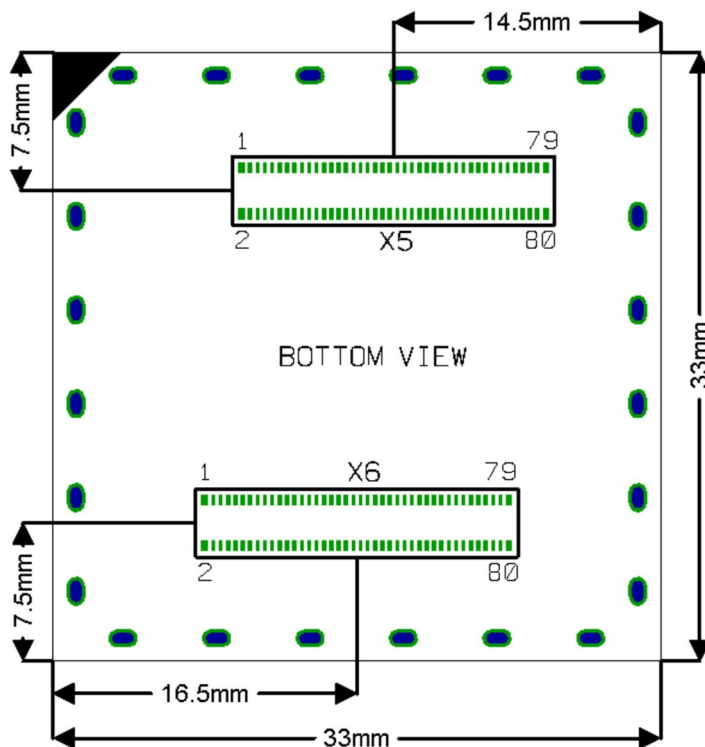
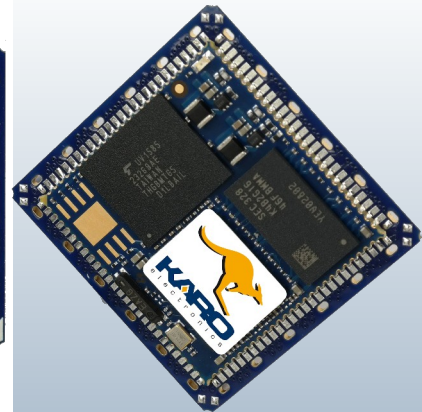


## Socketed QFN Style Solder-Down Computer On Module

- 33mm square
- 2mm stacking height

### Bottom View



Mating connector: **Hirose DF40B(2.0)-80DS-0.4V(51)**

## Pinout

| QS  | QSSOCK | QS  | QSSOCK                  | QS  | QSSOCK | QS   | QSSOCK |
|-----|--------|-----|-------------------------|-----|--------|------|--------|
| 1A  | X5/3   | 26A | X5/75                   | 51A | X6/75  | 76A  | X6/3   |
| 1   | X5/9   | 26  | X5/78                   | 51  | X6/78  | 76   | X6/9   |
| 2   | X5/11  | 27  | X5/76                   | 52  | X6/76  | 77   | X6/11  |
| 3   | X5/13  | 28  | X5/74                   | 53  | X6/72  | 78   | X6/13  |
| 4   | X5/15  | 29  | X5/72                   | 54  | X6/70  | 79   | X6/17  |
| 5   | X5/17  | 30  | X5/68                   | 55  | X6/66  | 80   | X6/19  |
| 6   | X5/21  | 31  | X5/66                   | 56  | X6/64  | 81   | X6/23  |
| 7   | X5/23  | 32  | X5/64                   | 57  | X6/58  | 82   | X6/25  |
| 8   | X5/25  | 33  | X5/62                   | 58  | X6/56  | 83   | X6/29  |
| 9   | X5/27  | 34  | X5/60                   | 59  | X6/52  | 84   | X6/31  |
| 10  | X5/29  | 35  | X5/58                   | 60  | X6/50  | 85   | X6/35  |
| 11  | X5/33  | 36  | X5/44                   | 61  | X6/46  | 86   | X6/37  |
| 12  | X5/35  | 37  | X5/42                   | 62  | X6/44  | 87   | X6/41  |
| 13  | X5/37  | 38  | X5/40                   | 63  | X6/40  | 88   | X6/43  |
| 14  | X5/39  | 39  | X5/38                   | 64  | X6/38  | 89   | X5/28  |
| 15  | X5/41  | 40  | X5/36                   | 65  | X6/34  | 90   | X5/26  |
| 16  | X5/45  | 41  | X5/34                   | 66  | X6/32  | 91   | X5/24  |
| 17  | X5/47  | 42  | X5/32                   | 67  | X6/28  | 92   | X5/22  |
| 18  | X5/49  | 43  | X6/47                   | 68  | X6/26  | 93   | X5/20  |
| 19  | X5/55  | 44  | X6/49                   | 69  | X6/22  | 94   | X5/18  |
| 20  | X5/59  | 45  | X6/51                   | 70  | X6/20  | 95   | X5/16  |
| 21  | X5/63  | 46  | X6/55                   | 71  | X6/16  | 96   | X5/14  |
| 22  | X5/65  | 47  | X6/57                   | 72  | X6/14  | 97   | X5/10  |
| 23  | X5/67  | 48  | X6/59                   | 73  | X6/10  | 98   | X5/8   |
| 24  | X5/69  | 49  | X6/61<br>X6/63<br>X6/65 | 74  | X6/6   | 99   | X5/6   |
| 25  | X5/71  | 50  | X6/67<br>X6/69<br>X6/71 | 75  | X6/4   | 100  | X5/4   |
| 25A | X5/77  | 50A | X6/77                   | 75A | X6/5   | 100A | X5/5   |

## GND

|       |       |       |       |       |       |       |       |       |
|-------|-------|-------|-------|-------|-------|-------|-------|-------|
| X6/1  | X6/15 | X6/30 | X6/45 | X6/62 | X6/80 | X5/19 | X5/53 | X5/73 |
| X6/2  | X6/18 | X6/33 | X6/48 | X6/68 | X5/1  | X5/30 | X5/56 | X5/79 |
| X6/7  | X6/21 | X6/36 | X6/53 | X6/73 | X5/2  | X5/31 | X5/57 | X5/80 |
| X6/8  | X6/24 | X6/39 | X6/54 | X6/74 | X5/7  | X5/43 | X5/61 |       |
| X6/12 | X6/27 | X6/42 | X6/60 | X6/79 | X5/12 | X5/51 | X5/70 |       |

### Pins used for manufacturing and debugging – leave unconnected

| QS | QSSOCK |             | QS | QSSOCK |          | QS | QSSOCK |          |
|----|--------|-------------|----|--------|----------|----|--------|----------|
| C1 | X5/46  | JTAG_TDI    |    |        |          | C3 | X5/52  | JTAG_TCK |
|    |        |             | B2 | X5/50  | JTAG_TDO |    |        |          |
| A1 | X5/48  | JTAG_TRST_B |    |        |          | A3 | X5/54  | JTAG_TMS |